

- Légende :**
- : borne nouvelle
 - ⊥ : borne OGE existante
 - : piquet bois

-NOTA-

Le système de coordonnées X,Y est indépendant
 Les côtes et surfaces seront définitives après bornage en fin de travaux de viabilité

Département de la NIEVRE

COMMUNE DE SAINT-BENIN-D'AZY

Lotissement Communal des Brosses

Tranche 2

Plan de bornage des lots

Echelle : 1/500



Jean-Paul RAQUIN
Jean ROLLAND
 Géomètres-Experts D.P.L.G.
 E-mail :
 geometre-raquin@wanadoo.fr

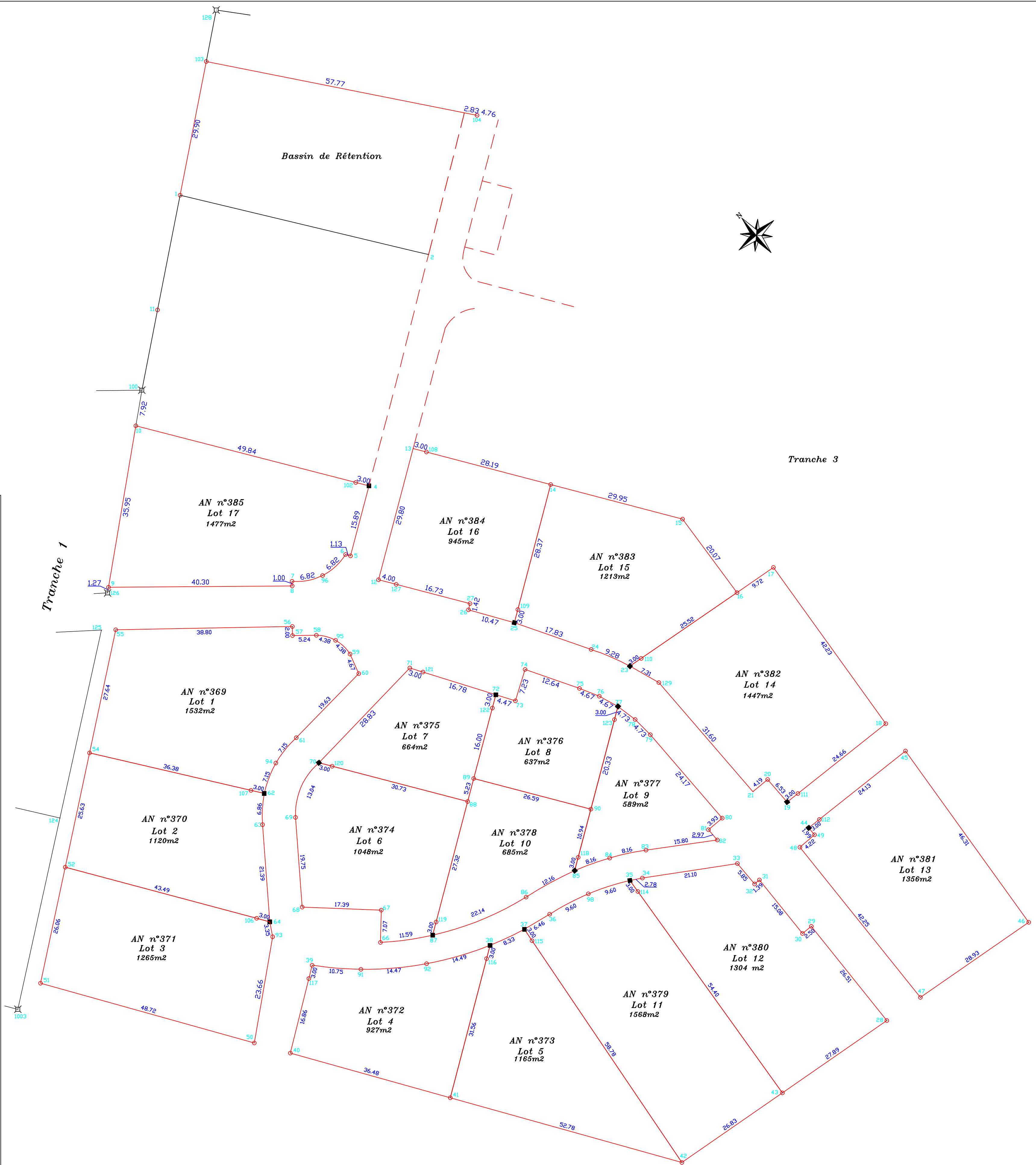
Bureau Principal
 2, av Saint Just
 58003 NEVERS Cedex
 Tél. : 03.86.61.13.29

Bureau Secondaire
 6, rue du Grenier à Sel
 58501 CLAMECY Cedex
 Tél. : 03.86.24.47.14

Permanence à DECIZE : 5, place de la république, le mardi de 10h à 18h

Dressé le 18 Juillet 2016
 Complété après numérotation le 29 Juillet 2016

-Référence- : D n°9916
 CD n°A5



MATRICULE	X	Y
1	1299.6530	1989.6960
2	1354.2001	1976.6649
4	1341.1123	1925.9023
5	1337.0631	1910.5372
6	1335.9745	1910.8100
7	1324.2444	1904.9380
8	1324.2515	1903.9380
9	1283.9484	1903.6504
10	1289.9458	1939.0971
11	1294.7160	1964.5040
12	1343.2359	1905.2869
13	1350.8196	1934.1059
14	1380.9925	1925.2033
15	1409.9616	1918.6164
16	1421.9026	1902.4858
17	1429.9090	1907.9920
18	1454.5440	1873.7120
19	1432.9088	1856.5072
20	1428.6356	1861.4444
21	1425.3986	1858.7870
23	1398.4034	1886.3267
24	1389.8808	1899.9272
25	1373.0450	1895.8577
26	1362.9640	1898.6811
27	1362.9277	1900.0648
28	1454.8032	1808.5364
29	1438.2181	1829.2230
30	1436.2683	1827.6582
31	1426.8322	1839.4228
32	1425.7705	1838.4619
33	1421.9371	1842.9349
34	1401.1371	1839.8327
35	1398.4094	1839.2941
36	1380.7839	1831.8785
37	1375.2372	1828.5687
38	1367.6982	1825.0271
39	1328.6463	1820.6756
40	1323.8493	1801.4002
41	1358.9655	1791.5823
42	1409.8190	1777.3782
43	1431.8757	1792.6557
44	1437.6411	1850.8314
45	1458.8921	1867.6946
46	1485.9330	1830.9985
47	1462.1480	1813.6238
48	1435.7095	1846.5801
49	1438.9298	1849.3126
50	1315.9351	1803.6116
51	1263.0097	1816.6237
52	1274.4337	1842.2130
54	1279.7687	1867.2842
55	1285.5216	1894.3190
56	1324.3135	1895.0183
57	1324.3293	1892.0384
58	1329.5649	1893.1169
59	1336.9659	1888.9664
60	1338.8635	1884.6986
61	1345.1710	1870.6323
62	1318.1296	1858.3972
63	1317.7638	1851.5487
64	1319.3481	1830.2148
65	1343.6284	1825.6235
66	1343.8308	1832.7587
68	1326.4541	1833.4351
69	1324.9953	1853.1337
70	1330.1272	1851.1194
71	1330.0915	1893.3212
72	1368.9788	1880.0407
73	1373.2484	1878.7114
74	1375.3970	1885.6100
75	1381.3299	1881.4506
76	1391.6792	1879.7444
77	1395.7752	1877.4967
78	1399.5386	1874.6365
79	1408.8756	1871.2987
80	1418.6367	1858.9765
81	1415.6586	1850.4388
82	1417.5817	1848.1736
83	1401.9427	1845.9420
84	1393.9649	1844.2162
85	1386.2827	1841.4579
86	1375.6122	1835.6298
87	1355.1062	1827.2802
88	1362.7685	1856.6191
89	1364.1082	1861.6719
90	1389.8324	1854.9348
91	1339.3597	1819.7740
92	1353.7731	1821.0129
93	1319.9687	1826.9252
94	1320.6797	1865.0734
95	1333.8062	1892.0060
96	1330.9399	1906.2151
98	1389.2749	1836.3510
100	1291.2670	1946.9060
102	1338.2073	1926.6514
103	1305.4020	2019.0350
104	1364.8359	2007.2165
106	1316.4498	1830.9890
107	1315.4070	1859.0743
108	1353.7217	1933.3459
109	1373.8051	1898.7598
110	1400.8754	1888.0265
111	1435.2577	1898.3734
112	1439.9911	1852.6962
114	1400.1584	1836.8567
115	1376.9166	1826.0828
116	1365.9419	1822.1240
117	1327.3212	1817.7644
118	1387.0468	1844.3589
119	1355.8643	1830.1829
120	1333.0305	1864.3634
121	1352.9559	1895.0294
122	1368.2099	1877.1409
123	1395.0111	1874.5957
124	1273.2673	1852.9880
125	1282.4027	1894.2611
126	1287.3363	1902.3969
127	1347.1069	1904.2793
128	1307.5820	2030.3440
129	1404.7673	1882.7267
1003	1264.0420	1811.0220